



REDD+
FIJI



R-Package of Fiji

REDD+ Readiness Self-Assessment

Forest Carbon Partnership Facility 27th Participants Committee
Meeting
Washington DC
March 19, 2019



REDD+
FIJI



Contents

- Country context, international commitment
- REDD+ Process in Fiji
- R-Package Self - Assessment Process
- Progress under four REDD+ readiness components
- Financial status and Disbursement
- Carbon Fund Emission Reduction Program Summary
- Conclusion and the way forward



REDD+
FIJI



Country Context



- No. of islands: 330
- About one third are inhabited
- Population: 865,611 (2014)
- Forest area: 52% (2007)
- Approx. 83% of area is under native land tenure
- Native land belong to village groups



REDD+
FIJI



International Commitment and Political will

- Fiji joined UNFCCC in 1992
- First country to rectify the Paris Agreement on Climate Change
- President of the COP 23
- National REDD+ Policy, National Climate Change Policy, National Forest Policy, Green Growth Framework
- Fiji acknowledges the importance of Forestry Sector as an approach to addressing the climate change
- Government budget and in-kind support for REDD+ and related activities
- Multi-sectoral Steering Committee
- Fiji Issued first developing country Green Bond, raising \$50 Million for Climate Resilience



COP23 | FIJI

UN CLIMATE CHANGE CONFERENCE

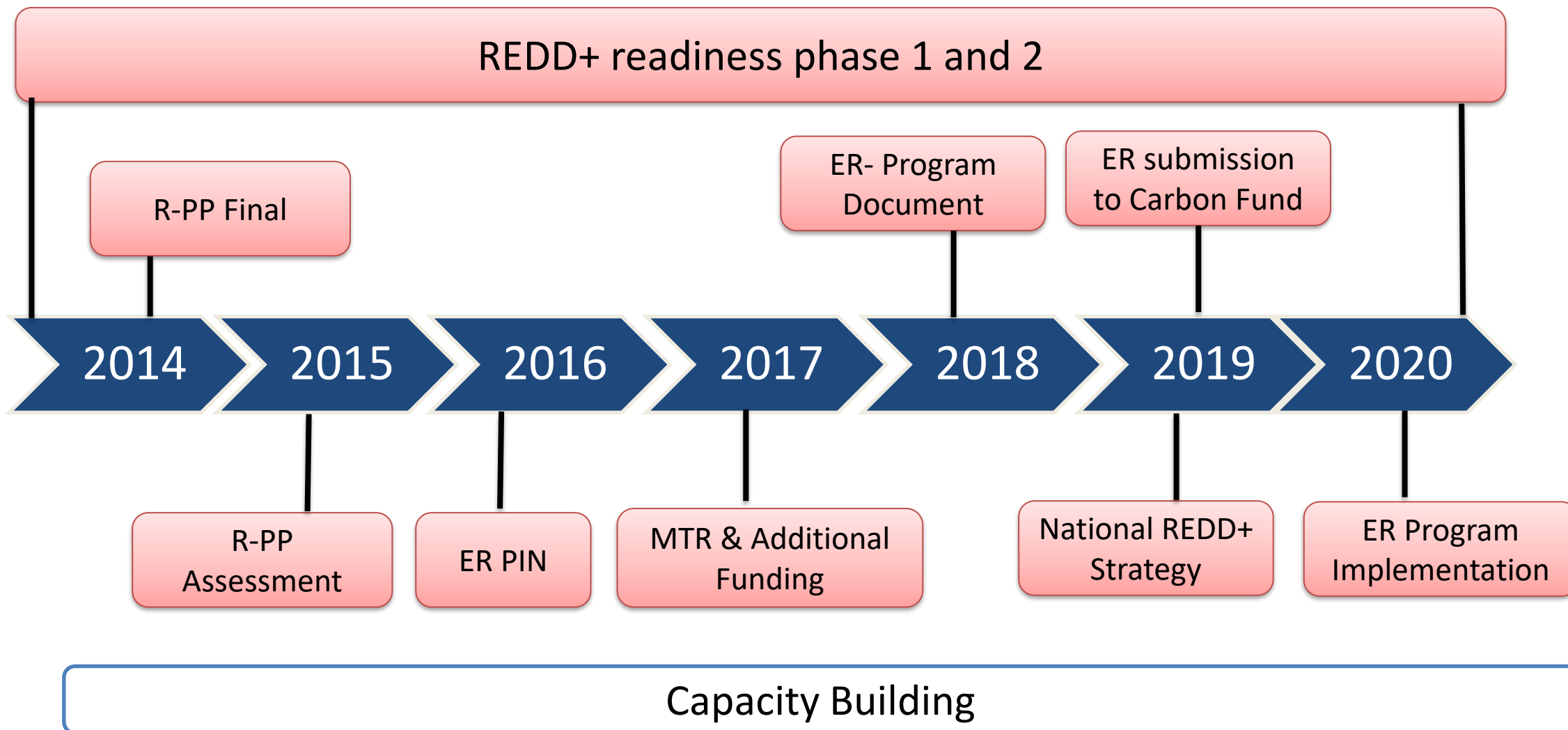
BONN 2017



REDD+
FIJI



REDD+ Process in Fiji





REDD+
FIJI



R-Package Self-Assessment Process

Team Consist
of TA and
Government
staff

Three
Divisional
Level
Consultation
s

Representation
from
Government,
CSOs, INGO,
Donor Partners,
Land owners

Validation
WS and
Finalisation
of
Readiness
Assessment





REDD+
FIJI



Summary of R-Package evaluation based on the self-assessment

Components	Sub Components	Progress Status
1. Organization and Consultation	1a. National Readiness Management Arrangement	Green
	1b. Stakeholder Consultation and Participation	Green
2. Prepare the REDD Strategy	2a. Assessment of Land Use, Forest Policy and Governance	Yellow
	2b. REDD Strategy Options	Green
	2c. REDD Implementation Framework	Yellow
	2d. Social and Environmental Impacts	Green
3. Reference emission level/reference level		Green
4. Forest monitoring systems and safeguard measures	4a. National forest monitoring system	Green
	4b. System of information on the multiple advantages, governance and safeguards	Yellow

Green	'Significant progress.'	Orange	'Further development required.'
Yellow	'Progressing well, further, development required.'	Red	'not yet demonstrating progress.'



REDD+
FIJI

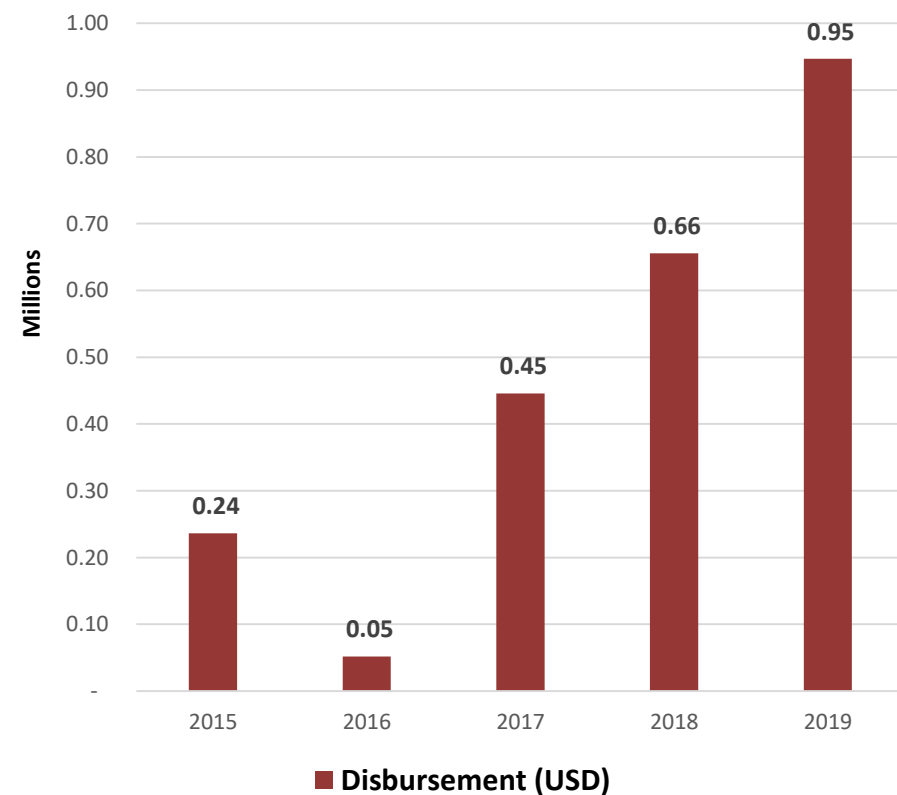


REDD+ Readiness Financing

Funding Agency	Grant amount (Mil. USD)	Disbursement (USD)	% disbursement	Commitment# (USD)	% of committed+ (includes disbursed amount)
FCPF	5.8	2.35	41	0.68	53%
GIZ	0.58	0.33	56.90	0	56.90
Government of Fiji	0.68	0.50	73.5	0	75.5

committed amount includes contract signed

FCPF Readiness Fund Disbursement





REDD+
FIJI



Component 1: Organization & Consultation

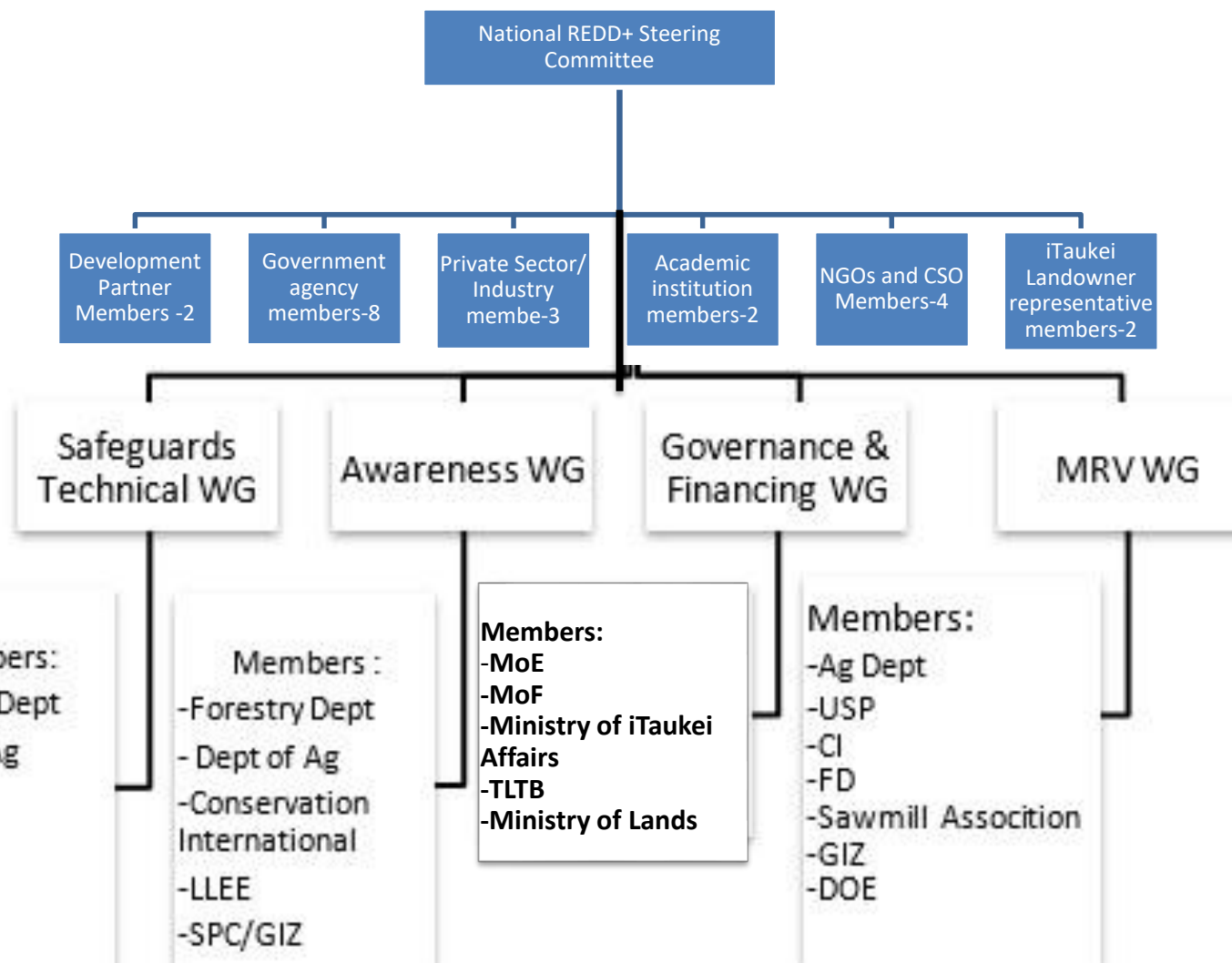
- REDD+ Policy 2011
- REDD+ Steering Committee
- Technical Working Group
- REDD+ divisional working Group
- Civil Society Organisation Platform
- Feedback Grievance Redress Mechanism
- Consultation Strategy – in place
- Consultation and Participation Plan
 - Aligned to existing traditional structures
 - Supported by line Ministries such as Ministry of iTaukei Affairs
 - Use of social media effectively



REDD+
FIJI



Component 1: Organization & Consultation



National REDD+ Steering Committee:

- Established in 2009
- Multi sectoral stakeholder platform
- Discusses issues, progress, mainstream REDD+ into development dialogue
- x 4 Technical Committee to support REDD+ SC decision making

Ministry of Forestry:

- Chairperson of the REDD+ SC
- Established REDD+ Unit 2016
- REDD+ Unit spearheads Readiness Phase



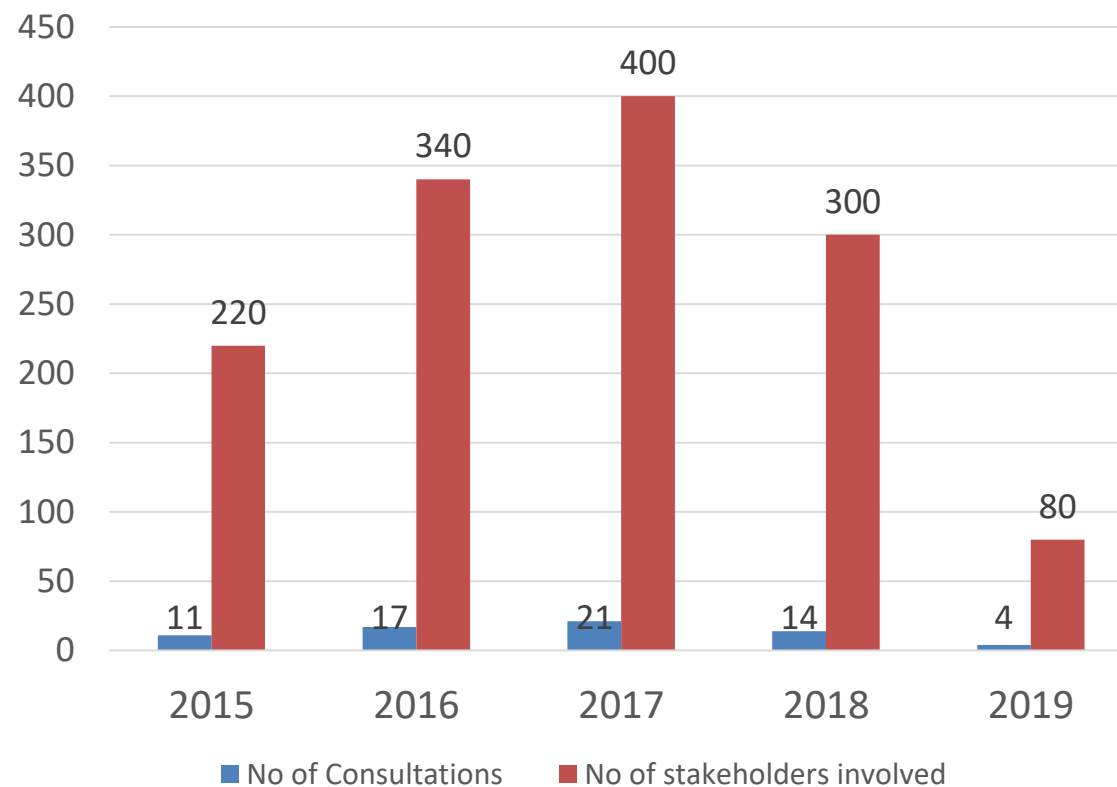
REDD+
FIJI



Component 1: Organization & Consultation

- Institutional mechanism has been established to ensure the participation of key stakeholders
- Fiji follows self selection process to identify right holders and stakeholders
- About 90% of the land of Fiji is under customary practices hence various kinds of institution exist and consultation process fully utilizes these institutions
- A CSO platform is established for outreach and transparency

Major REDD+ Stakeholders Consultations





REDD+
FIJI



Component 1: Way Forward: Organization & Consultation

Proposed Activities	Time Line	Current status
<ul style="list-style-type: none">• Mainstream REDD+ and ensure key ministries to include REDD+ workplan• Implementation of FGRM process for REDD+	April 2019	In discussion with all REDD+ relevant ministries, CSOs, Private Sector
<ul style="list-style-type: none">• Upgrade REDD+ website	March 2019	Hired a consultant to design and develop user friendly website



REDD+
FIJI



Component 2: REDD+ Strategy Preparation

- Key Studies completed:
 - Drivers of Deforestation, Forest Degradation and underlying causes
 - Assessment of Land use and land use change
 - Legal and Policy Analysis, Forest Law, Policy and Governance
 - REDD+ Strategy Options
 - Cost-Benefit Analysis of Strategy Options
 - Draft SESA
 - Fiji REDD Policy (2011)
 - Fiji National Forest Carbon Stock Assessment (2011)
 - REDD+ and Forest Carbon Rights (2013)
- Other studies to complete:
 - **Carbon rights assessment** (April 2019)
 - **Benefit Sharing Mechanism** (April 2019)
 - **Final SESA & ESMF** (June 2019)
 - **REDD+ Strategy** (June 2019)



REDD+
FIJI



Way Forward: REDD+ Strategy Preparation

Proposed Activities	Time Line	Current status
<ul style="list-style-type: none"> • Validate assessment of the Drivers of Deforestation and Forest Degradation with spatial and economic models. • Continue to Raise Awareness on the REDD+ Strategy Option 	<p>April 2019</p> <p>Feb – Dec. 2019</p>	<p>In progress</p>
<ul style="list-style-type: none"> • Upgrade the database management system • REDD+ system registry operational by 2020 	<p>April 2019</p> <p>Dec 2019</p>	<p>In progress</p>

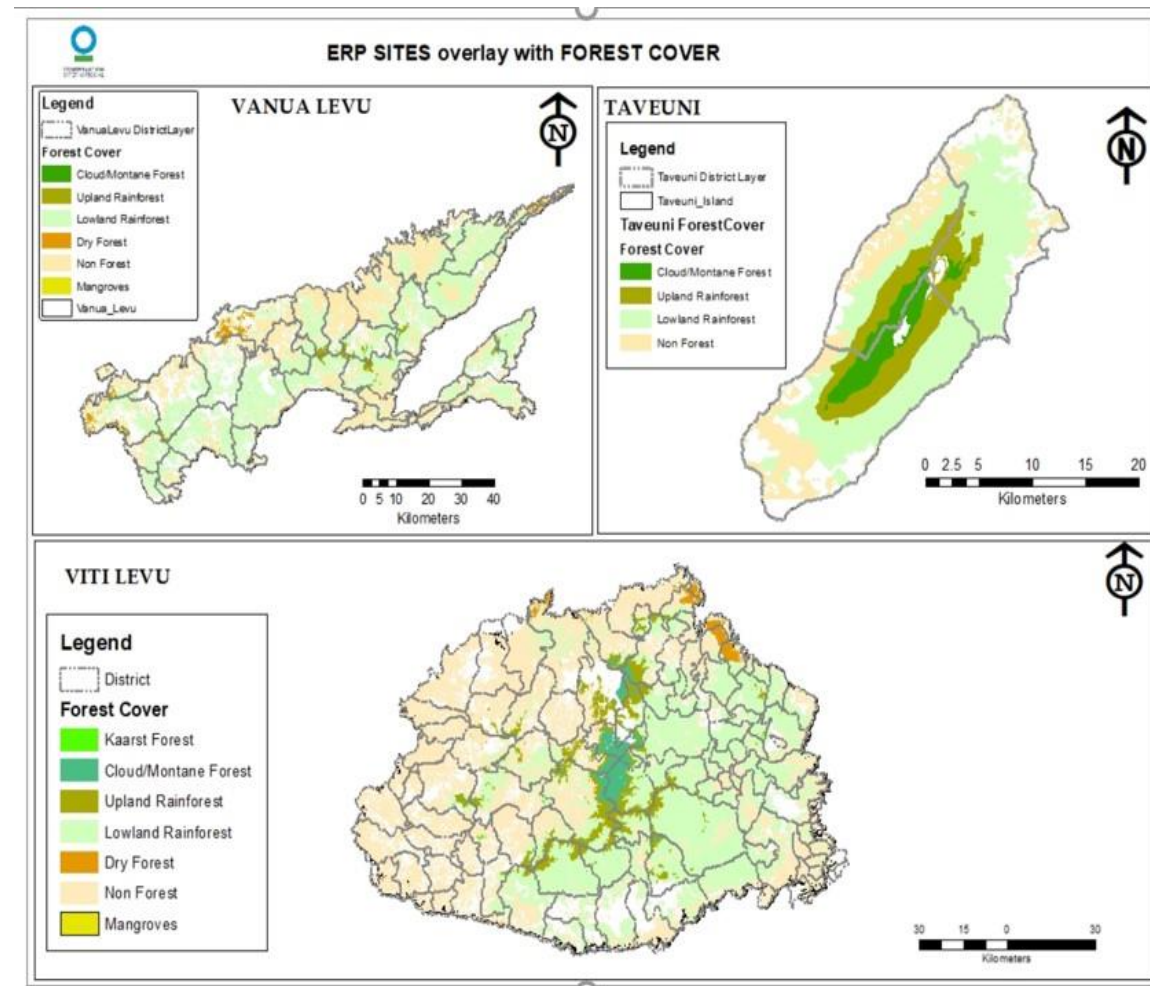


REDD+
FIJI



Component 3: Forest Reference Level

- Constructed FRL covering three major islands; Viti Levu, Vanua Levu and Taveuni
- The FRL covers approximately 90% of Fiji's landmass and about 94% of Fiji's forest area
- Reference period for forest reference level: 2006-2016.





REDD+
FIJI



Component 3: Forest Reference Level

Strength of the FRL

- Sub-national level FRL
- The activities covered under FRL include deforestation, forest degradation and enhancement of forest carbon stock
- The design of the FRL consistent with recent IPCC guidelines and guidance
- A stepwise approach adopted to improve the FRL by incorporating improved data and methodologies and additional pools

Areas for improvement

- Only two pools of carbon are included
- Improved methods for estimating forest degradation
- To extend the sub-national FRL to national FRL

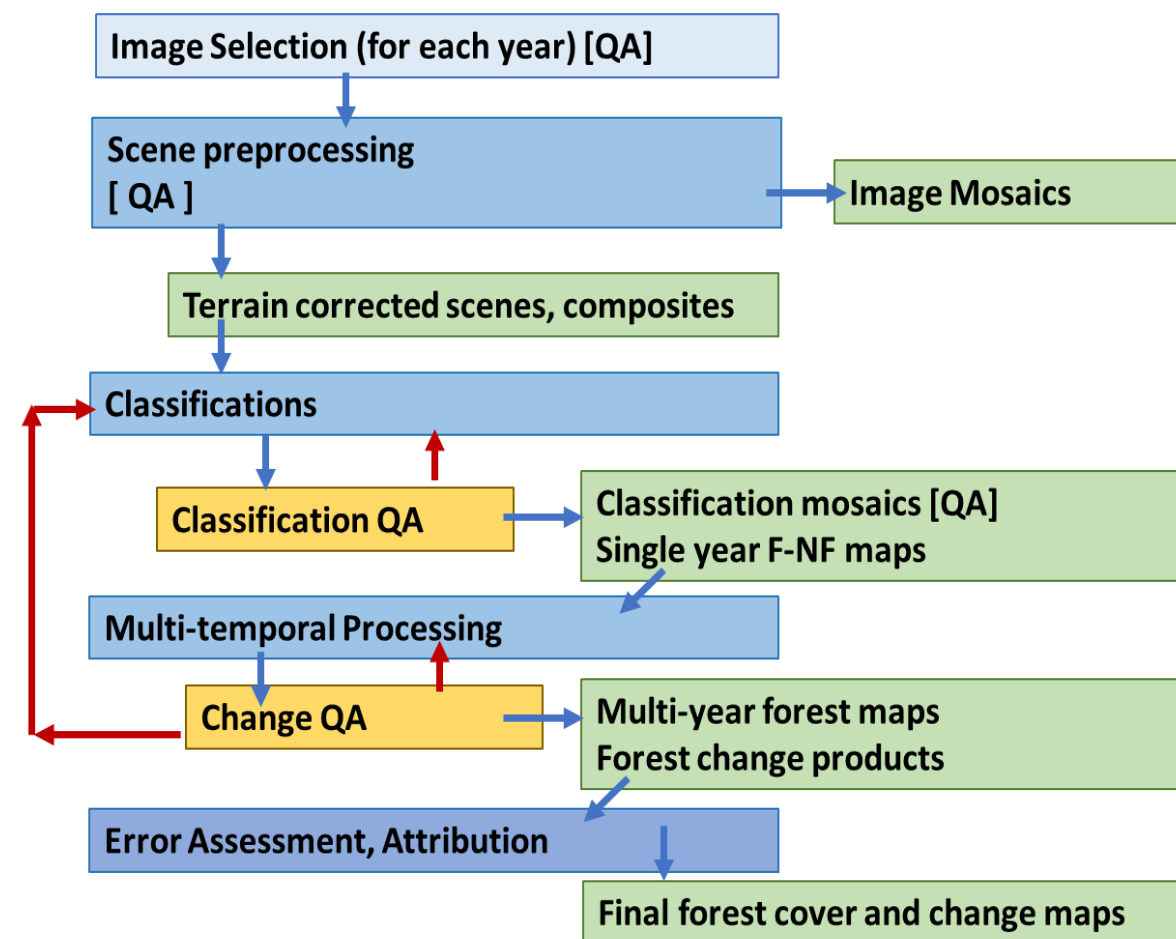


REDD+
FIJI



Component 3: The improvement of the FRL

- A stepwise approach is used
- A multi-temporal approach using digital classification used to generate forest activity data
- Annual time series of forest cover and change produced using supervised classification methods





REDD+
FIJI



Activities Planned to Improve the FRL (under Additional Financing)

SN	Activities	Time Line(Year)	Current status
1	Produce multi-temporal forest activity data using the semi-automatic method	2019	Near completion
2	Develop biomass and volume allometric equations for 10 important tree species	2019	Developing a ToR
3	Improved methods to assess forest degradation using remote sensing approaches	2019	Undergoing in collaboration with CSIRO
4	Estimate emission/removal factor of litter, deadwood, and soil organic carbon, forest fire	2019/2020	Developing ToR
7	Upscaling of sub national FRL to national FRL	2019	Image processing
8	Design a New NFI and its Implementation	2020	Developing ToR



REDD+
FIJI



Component 4a: National Forest Monitoring System

What we have done

- Use combination of remote sensing and ground based forest carbon inventory approaches
- Proposed NFMS is consistent with national and international guidance
- Sources of uncertainties are identified and their management proposed
- Improvement of NFI and allocation and design of PSPs

What we are planning to do

- Operationalize REDD+ national forest monitoring system



REDD+
FIJI



Component 4a: National Forest Monitoring System

What we have done

- Improved capacity for RS/GIS analysis
- Separate organization responsible for forest inventory and assessment
- Capacity development plan to address capacity needs to operationalise the NFMS
- Hardware and software systems in support of NFMS established

What we are planning to do

- Continue training on RS/GIS analysis
- Institutionalize roles for implementation of NFMS
- Enhance technical capacity of staff in conducting MRV



REDD+
FIJI



Comp 4b: Information System for Multiple benefits, other impacts, and safeguards

What we have done

- SESA report identified social and environmental issues
- Identified priority non-carbon benefits
- A database system established to share the safeguard information
- Study report (SESA and ESMF) suggested institutional arrangements for monitoring of non-carbon benefits and safeguards

What we are planning to do

- Establish mechanisms for monitoring of non-carbon benefits
- SIS is under design and to be institutionalized
- Institutional arrangements in support of SESA and ESMF to be established



REDD+
FIJI



Comp 4: Activities to Improve Monitoring System (under Additional Financing)

SN	Activities	Timeline (Year)	Current status
1	Trainings to the REDD+ stakeholders (GIS/RS, Statistical Analysis, Forest Inventory, Data Analysis, Database, IPCC guidance and Guideline)	2019-20	Developing ToRs
2	Develop Safeguard Information System	2020	Developing ToRs
3	Identify country specific indicators for Cancun Safeguard	2019	Developing ToR
4	Operationalize National Forest Monitoring System	2019-20	Continuous process
5	Improve Database System	2019-20	Continuous process



REDD+
FIJI



Carbon Fund Program Summary

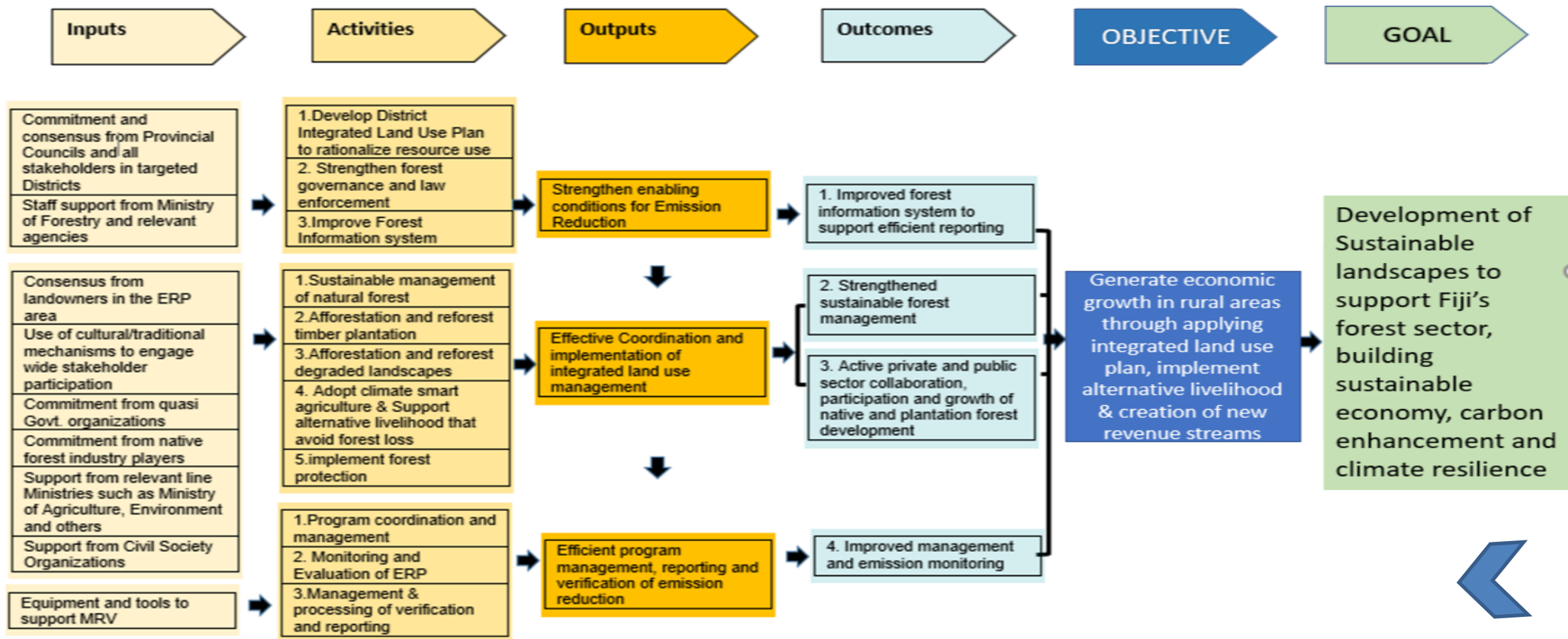
- Developing an ERP covering 90 % of the landmass and 94% of the forest over
- Includes three major islands of the country
- Duration: 2020-2024
- Supports Govt of Fiji National Development Plan ➤
- The ER program requires: Approx. US\$37 m
- Main interventions: Afforestation/Reforestation, improved logging and Agroforestry, Integrated District Land Use and Management Plan ➤



REDD+
FIJI



Theory of Change





REDD+
FIJI



Conclusions and the way forward

- Develop REDD+ Strategy and Develop Benefit Sharing Plan
- Finalize SESA and ESMF
- Enhance stakeholder's capacity at all levels, continue consultations, especially at divisional and community level, and further enhance CSO engagement
- Improve FRL and National Forest Monitoring System
- Establish Safeguards Information System
- Advance REDD+ readiness activities focusing on ER program implementation; e.g. Integrated land use management plans
- Strengthen multi-sector coordination among Ministries of Agriculture, Economy, Energy, Forestry, Lands and Women and other national agencies
- Accelerate procurement and disbursement for Readiness, Submit ERPD to Carbon Fund



REDD+
FIJI



Vinaka Vakalevu

Emalu Landscape, March 2017 (Photo: Prem Neupane)